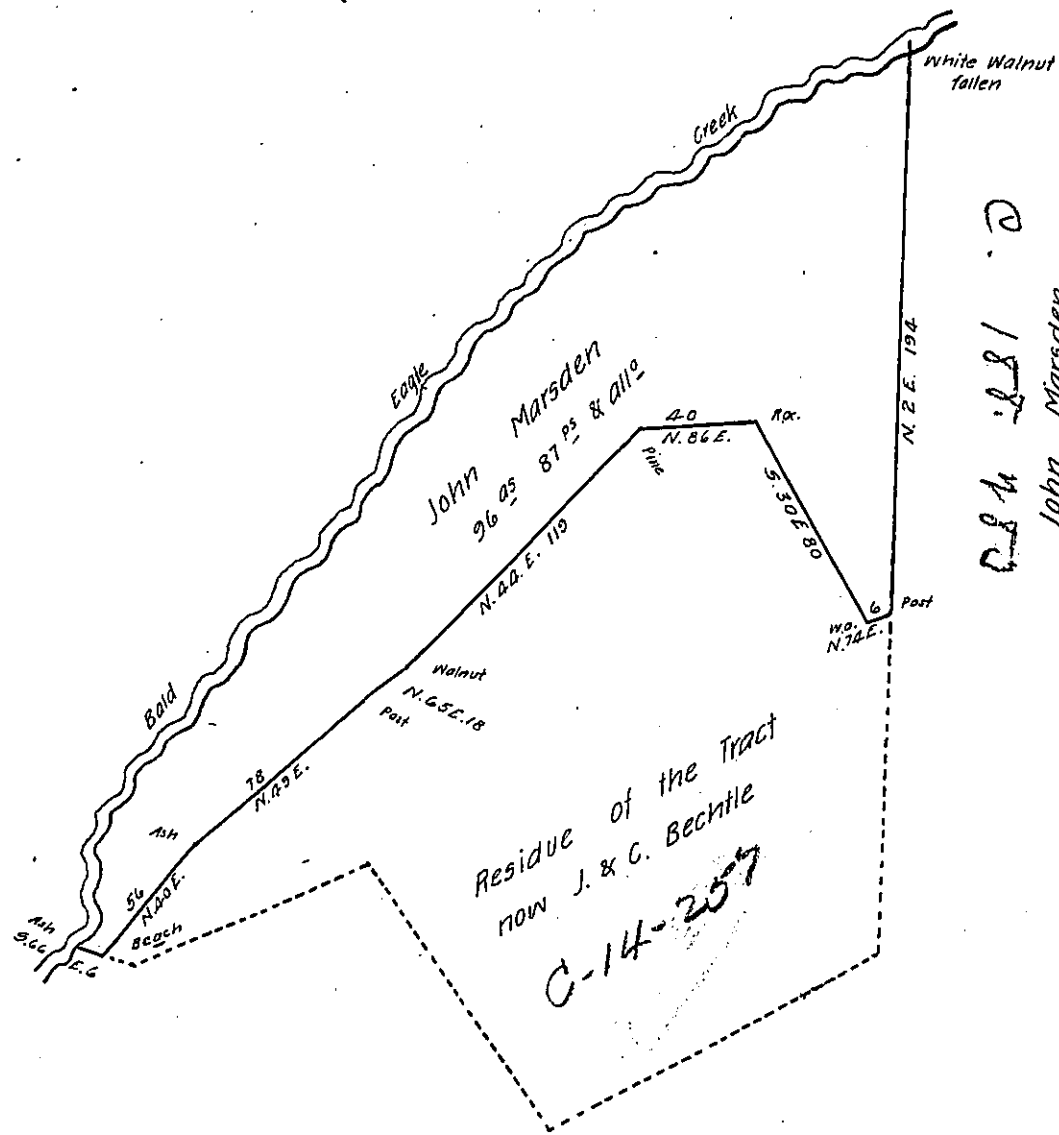


FORM No. 1.



Courses & Dist. up the creek from Walnut to Ash

S. 81 W. 20
S. 41 1/2 W. 273
S. 67 W. 48
S. 51 W. 60
S. 8 E. 32
S. 5 W. 18

Draft of a Tract of Land, situate in Liberty township Center County, (late Bald Eagle Township, Mifflin County) Containing ninety six acres eighty seven perches and allowance of six per Cent & c. Being part of a tract of land, Surveyed 28th June 1796 in pursuance of an application No. 1292 dated 3rd of April 1769. Granted to James Samuels. Resurveyed 14th September 1857 for John Marsden.

N. J. Mitchell

County Surveyor

To John Rowe Esq }
Surveyor General }

IN TESTIMONY that the above is a copy of the original remaining on file in the Department of Internal Affairs of Pennsylvania, made conformably to an Act of Assembly approved the 16th day of February, 1833, I have hereunto set my Hand and caused the Seal of said Department to be affixed at Harrisburg, this third day of October 1906

Samuel R. Brown
Secretary of Internal Affairs.